

#KIRANRESEARCH

#CONTEMPORARY INDIAN HOUSES



CLIENT SHAIVAL PATEL & RUJUL PATEL LOCATION AHMEDABAD YEAR OF COMPLETION 2010 SITE AREA 1000 sq.m BUILT AREA 980 sq.m COST INR 30 MILLION ARCHITECT VIPUL PATEL ARCHITECTS DESIGN TEAM VIPUL PATEL, RONAK PATEL, NAIYA PATEL CONSULTANTS PADMIN ENGINEERS CONTRACTORS RAVIJA ASSOCIATES PHOTOGRAPHS SAMIR PATHAK



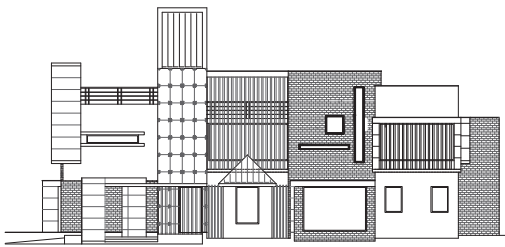
105 | DUAL HOUSE

The two houses on the site resemble each other but vary in their constituent forms and masses so that they look different depending on the viewpoint. Aluminium fins act as sun breakers without hindering cross-ventilation.

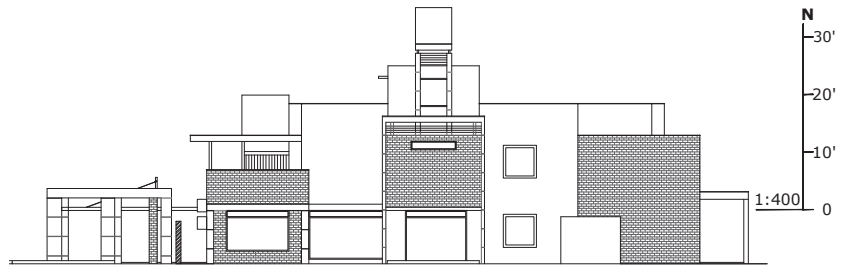
Exposed RCC and exposed brick work continue from the exterior façade into the interior with dashes of white. Kotah stone flooring complements the material and colour scheme and definitively demarcates spaces.

The double-heights keep the visual connection between the two floors. Small courtyards and full-height modern windows allow the landscape to be seen and enjoyed from inside the house.

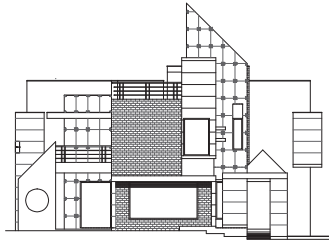
A high wall on the west side of the courtyard in one of the houses is provided with a cascade waterfall to create a wind tunnel and cool the house.



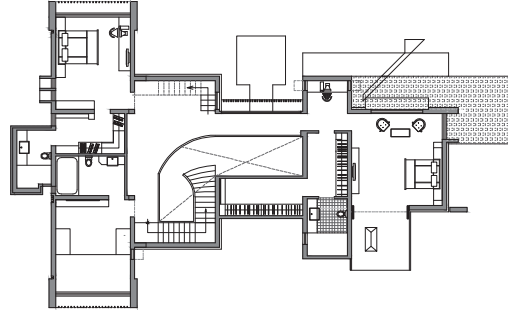
ELEVATION



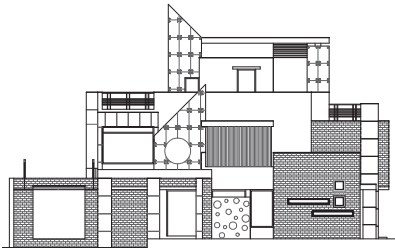
ELEVATION



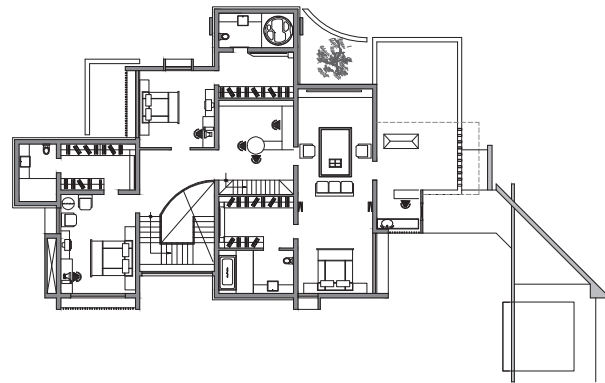
ELEVATION



FIRST FLOOR PLAN



ELEVATION



GROUND FLOOR PLAN

